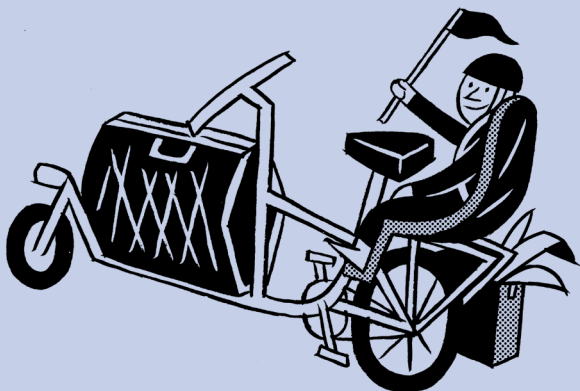


muli

VERSION EN 24.1

Instruction sheet muli carrier



General Information

To expand the transport options of the muli, we have developed our own luggage carrier. Despite our short rear triangle, it allows you to carry standard panniers and mount a child seat.

The luggage carrier is suitable for most common child carrier seats. Minimalist design, the best material, a comfortable support surface for baskets or crates - voilà!

The luggage carrier is compatible with all muli models with interchangeable dropouts from model year 2020. As luggage carrier bags are available in a wide range of formats and sizes, we recommend testing the bag on your bike before buying.

On our download portal you will find these manual in German and other languages and always up to date:
<https://muli-cycles.de/en/downloads>






Text types/lists used

This manual uses the following text types and lists:


- 1 Instruction for action (in a fixed order)
- Instructions for action (in any order)
- Listing

Symbols/labels used


This manual uses the following symbols and markings:

-  The warning triangle in conjunction with the word “WARNING” indicates risks that can lead to serious personal injury or even death.
-  The warning triangle in conjunction with the word “CAUTION” indicates risks that can lead to minor personal injury and damage to property.
-  The circled exclamation mark indicates important additional information.


Safety instructions

 **WARNING!** Risk of falling and injury
The luggage carrier is designed for a maximum load of 27 kg. If it is overloaded, it can be damaged and cause serious falls.


→ Never exceed the maximum load of the multi luggage carrier.

 **WARNING!** Risk of falling and injury
The permissible total weight of the multi of 200 kg must not be exceeded, even in conjunction with the multi luggage carrier.

→ Never exceed the permissible total weight and the respective load limits for the individual load suspension points.

 **WARNING!** Risk of falling and injury
The bolts fitted to the bike must always be replaced with the bolts supplied, as these are stronger.

→ Always use the screws supplied to mount the luggage carrier.

 **CAUTION!** Risk of injury
If incorrectly secured, the carrier may come loose and accidents may occur.

→ Read the installation instructions carefully and ensure that the carrier is correctly attached.

**CAUTION! Risk of injury**

When using a suitable child seat, it must only be attached to the luggage carrier and not to the seat tube. Otherwise the seat tube may be damaged and accidents may occur.

- Only use child seats that are designed for mounting on the luggage carrier.

**CAUTION! Risk of injury**

Be aware that the handling can change when loaded. The braking distance can also become longer due to the additional weight. This poses a risk of rear-end collisions and collisions.

- Calculate a longer braking distance with a higher load and adjust your driving and braking behavior accordingly.

**CAUTION! Risk of injury**

Carrying children in a suitable child seat on the luggage carrier can lead to weight shifts and a resulting change in riding behavior.

- Adapt your riding style and talk to your child about the influence it can have on riding behavior.

Assembly instructions

multi st, px, muscle

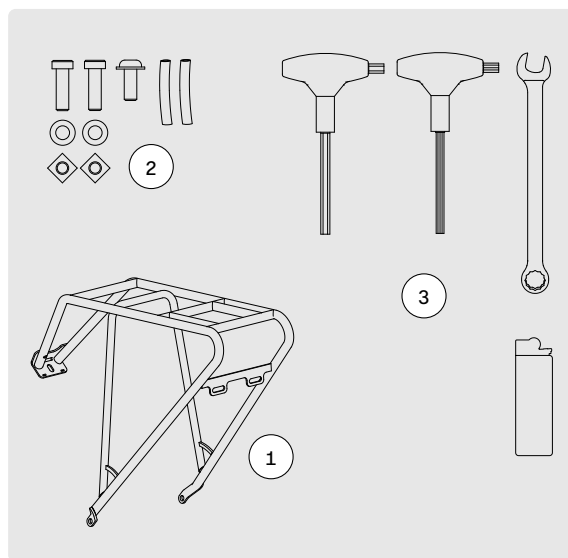


FIG. 1

1 PACKAGE CARRIER**2 SCREWS**

- 2 x M6x20 steel screws
- 1 x M6x16 steel screw
- 2 x M6 washers
- 2 x Square nut M6
- 2 x Shrink tubing

3 TOOLS REQUIRED

- 1 x Hexagon socket 4 mm
- 1 x Hexagon socket 5 mm
- 1 x Open-end wrench 8 mm
- 1 x Lighter or hot air gun

- 1 Remove the rear light installed on the gusset tube of the seat stays. To do this, first loosen the hexagon socket screw of the rear light bracket with the 4 mm hexagon socket. (Fig. 2)
- 2 Disconnect the cable connectors from the rear light. To do this, carefully pull the plugs off the rear light by hand or using pliers. (Fig. 3)
- 3 Loosen the two nuts on the rear light using an 8 mm open-end wrench and remove the rear light from the retaining plate. (Fig. 4)
- 4 Fasten the rear light with the washers and nuts to the retaining plate provided on the luggage carrier. Use an 8 mm open-end wrench for this. (Fig. 5)
- 5 Attach the cable connectors of the luggage carrier to the rear light. (Fig. 6 & 7)

⚠ Make sure the wiring is correct. The white striped cable is connected to the positive pole of the rear light.



FIG. 2



FIG. 3

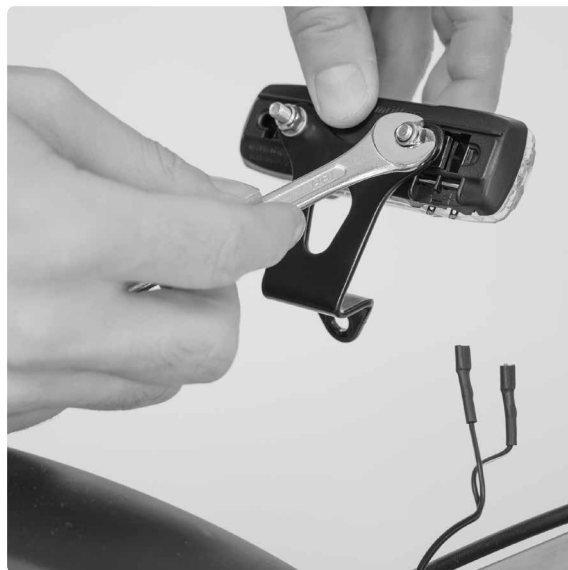


FIG. 4

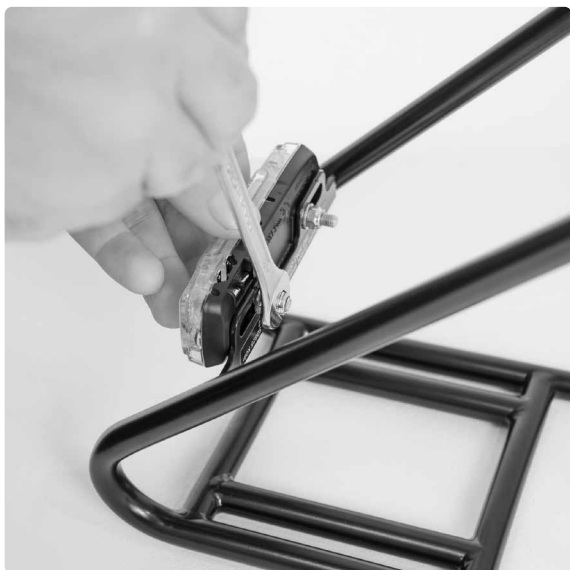


FIG. 5



FIG. 7

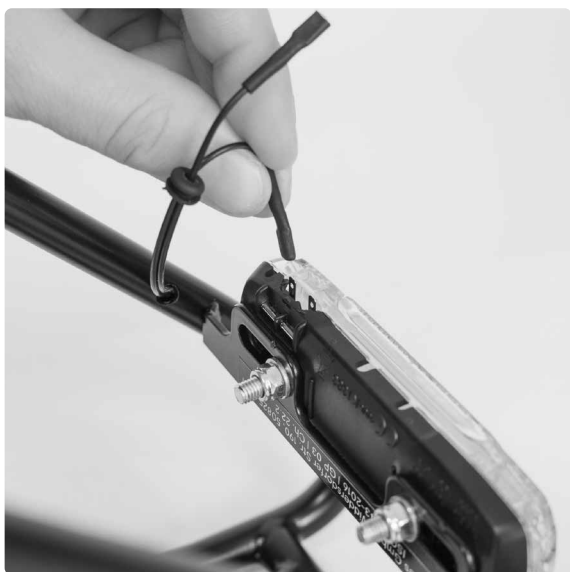


FIG. 6



FIG. 8

- 6 The dropouts of the muli are fastened with two M6 hexagon socket screws. To mount the carrier, loosen the upper of the two bolts on both sides of the wheel using a 5 mm Allen key. Press on the square nut on the inside with one finger.
- 7 Now place the carrier over the wheel so that the screw-on points of the carrier and frame are on top of each other.
- 8 Fasten the carrier to the dropout using the new stainless steel bolt and the new square nut supplied.



FIG. 9



FIG. 10

- 9 Attach the carrier to the top at the junction of the seat stays. Always use the new stainless steel bolt supplied for this. (Fig. 11)
- 10 Pull the supplied heat-shrink tubing over the two cables on the front part of the luggage carrier. (Fig. 12)
- 11 Connect the two plug connections by inserting the flat plug tongues of the luggage carrier cables into the flat plug sleeves of the cables on the bike. (Fig. 13)

⚠ Make sure the wiring is correct. The white striped cable is plugged into the positive terminal of the rear light.



FIG. 11

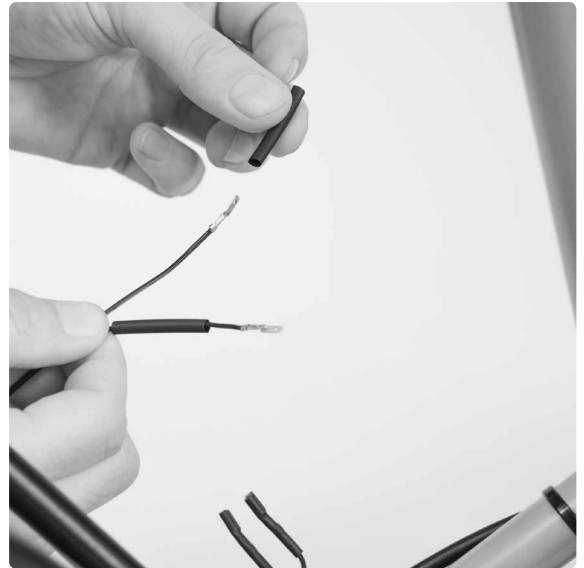


FIG. 12

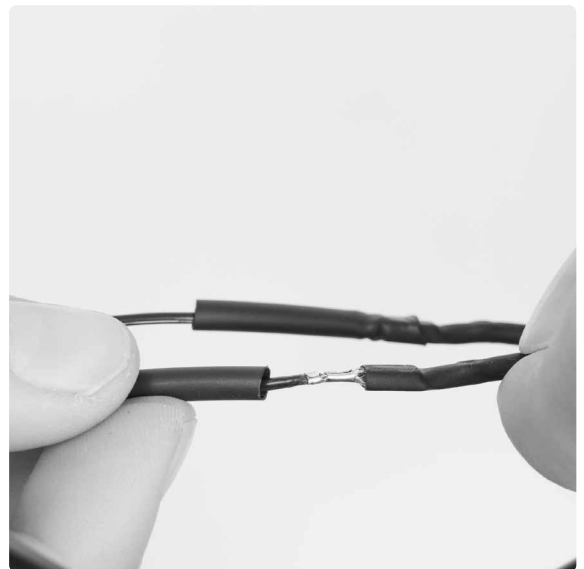


FIG. 13

- 12 In the last step, pull the heat-shrink tubing over the plug connections and heat it with a hot air gun or a lighter so that the heat-shrink tubing fits tightly around the plug connection. (Fig. 14)
- 13 Lay the cables as shown in Fig. 15.

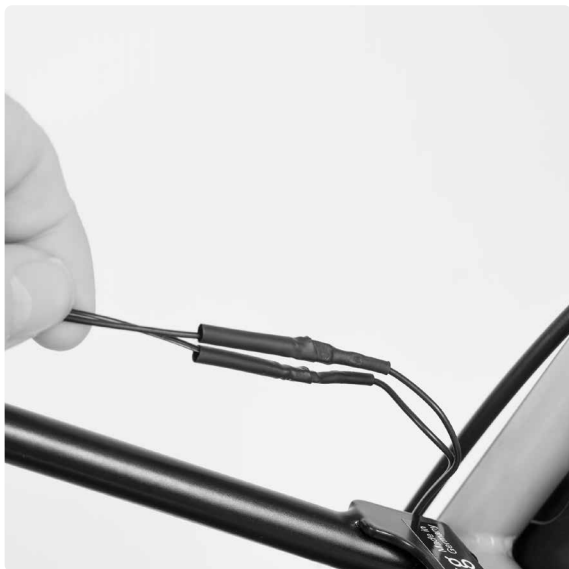


FIG. 14



FIG. 15

Assembly instructions st pro

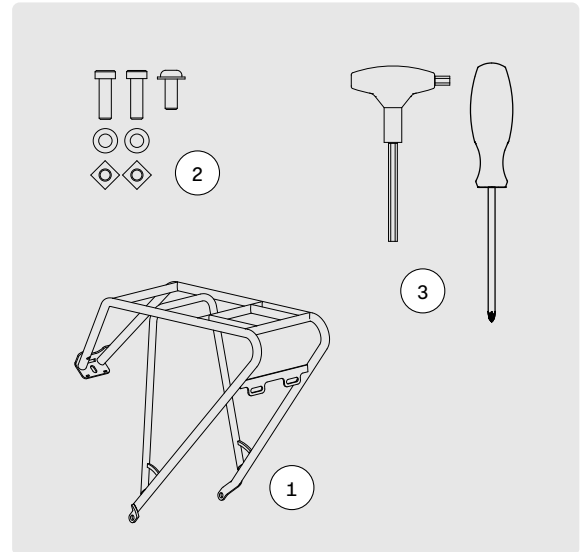


FIG.16

1 BAGGAGE CARRIER

2 SCREWS

- 2 x M6x20 steel screws
- 1 x steel screw M6x16
- 2 x M6 washers
- 2 x square nut M6

3 TOOLS REQUIRED

- 1 x Hexagon socket 4 mm
- 1 x Hexagon socket 5 mm
- 1 x Phillips screwdriver

- 1 Remove the reflector installed on the gusset tube of the seat stays. To do this, first loosen the reflector bracket screw with the 4 mm hexagon socket. (Fig. 17)
- 2 Then loosen the screw connection of the reflector with the Phillips screwdriver. Then remove the reflector from the retaining plate. (Fig. 18)
- 3 Then attach the reflector to the retaining plate provided on the luggage carrier. (Fig. 19)



FIG. 17



FIG. 18



FIG. 19

- 4 The dropouts of the muli are fastened with two M6 hexagon socket screws. To mount the carrier, loosen the upper of the two screws with the 5 mm hexagon socket on both sides of the wheel. Press on the square nut on the inside with one finger. (Fig. 20)
- 5 Now place the carrier over the wheel so that the screw-on points of the carrier and frame are on top of each other. (Fig. 21)
- 6 Fasten the carrier to the dropout using the new stainless steel bolt supplied and the new square nut. (Fig. 22)
- 7 Fasten the carrier to the gusset tube with the new stainless steel bolt supplied. (Fig. 23)



FIG. 20



FIG. 21



FIG. 22



FIG. 23

Imprint

BA-EX-13V24.1
©muli cycles GmbH

Widdersdorfer Str. 190
50825 Cologne

Text und graphics
muli cycles GmbH

Photography
Tim Kaiser

Design
Friederike Wolf, Frieder Oelze

www.muli-cycles.com